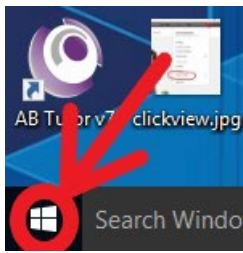
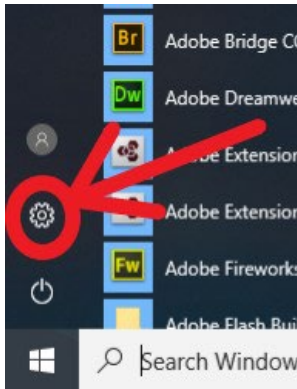


## Checking for Windows 10S

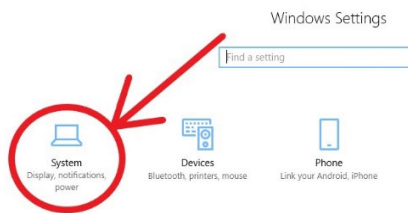
### 1. Click on Start



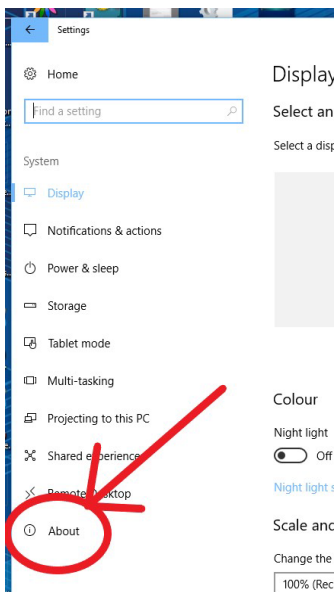
### 2. Click on Settings (Gear Wheel)



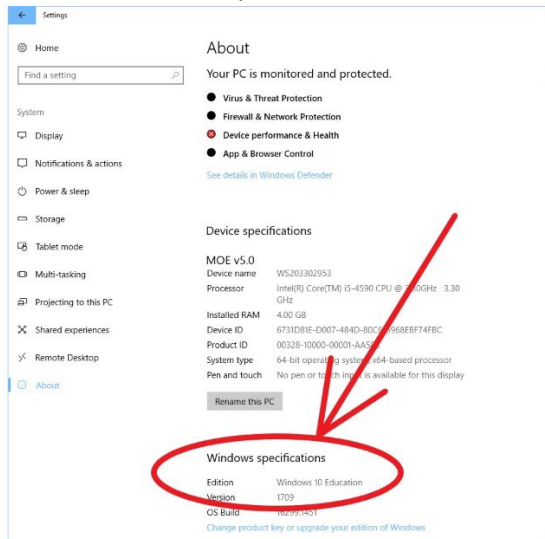
### 3. Click on System



### 4. Click on About



## 5. Scroll to Windows Specifications



## 6. Check what Edition says

7. If it says Windows 10 in S mode, The laptop will not onboard and Windows needs to be updated to Home or Pro.